

PROJECT	NOTES	TYPE	DATE	CAT. No.
---------	-------	------	------	----------



WSS

Wall Sconce Square

The WSS series sconce is a modern and elegant lighting solution. Crafted with a brushed nickel finish, it complements popular bath hardware seamlessly. Equipped with cutting-edge LED technology, this fixture boasts a long lifespan and exceptional color rendering. Whether for new installations or retrofits, the WSS sconce adds sophistication to corridors, restrooms, and other spaces.

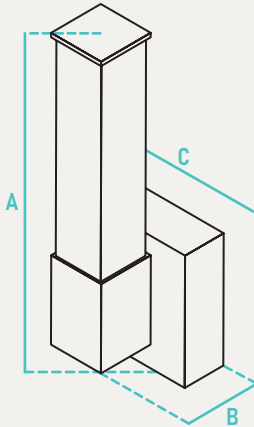


INPUT VOLTAGE	120V
INPUT FREQUENCY	50/60 Hz
RATED WATTAGE	See Performance Data
DELIVERED LUMENS	See Performance Data
EFFICACY	80 LPW (typ.)
CRI	90CRI
AVAILABLE CCT	3000K, 3500K, 4000K
LENS TYPE	Plastic

vRATED LIFE	30,000hrs (Based on 3hrs a Day)
L70	>50,000hrs
POWER FACTOR	>0.9
THD	N/A
DIMMING	N/A
OPERATING TEMP.	-4°F - 113°F / -20°C to 45°C
BEAM ANGLE	N/A

ORDER INFO / EXAMPLE: WSR-14-13-120-MCT-BN

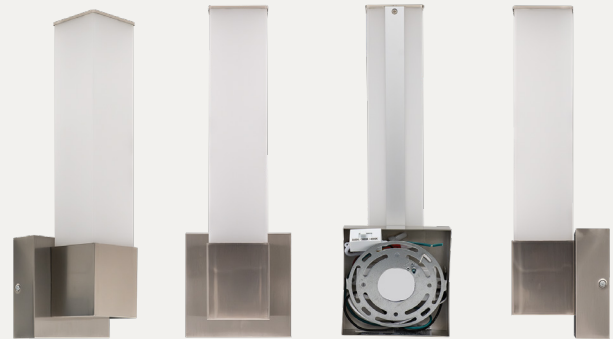
SERIES	FORM FACTOR	RATED WATTAGE	DRIVER TYPE	COLOR TEMP	FINISH
WSR	14	13	120	MCT	BN
WSS Wall Sconce Square	14-14" Length	13- 13W, 1040 Lumens	120- 120V	MCT- 3000K, 3500K 4000K; 90CRI	BN- Brushed Nickel



PERFORMANCE DATA				
FORM FACTOR	KELVIN	RATED WATTAGE	DELIVERED LUMENS	EFFICACY (LM/W)
14"	3K/35K/4K	13W	1040	80

QUICK SHIP
WSS-14-13-120-MCT-BN ⁴

ADDITIONAL IMAGES



Made to order items. Minimum 90 day lead time.
 Minimum order quantity may vary please contact sales.
¹ DLC Listed / ² DLC Premium Listed / ³ Title 24 / ⁴ JA8 & Title 24
 Typical color consistency. May vary or be changed. L70 hours calculated based on LED package manufacturer LM80 report and ISTMT report of LED in luminaire. Stated values are for select catalog numbers. Contact GlobaLux for detailed information.
 Actual performance may differ as a result of end-user environment and application. All values are design or typical values, measured under laboratory conditions at 25 °C.

	A	B	C	Case QTY
WSS-14	14" H	4.5" D	3.9" W	6

CONSTRUCTION

Aluminum housing with translucent acrylic diffuser. Lens design and materials provide uniform illumination without pixelation.

ELECTRICAL

Equipped standard with 120V fixed output driver, operating at 60Hz.

QUALIFICATIONS

All luminaires are built to UL 1598 and 2108 standards, and bear appropriate ETL labels. Damp location labeling is standard. Adheres to LM70, LM80 and TM21 industry standards. Dedicated 120V Models are FCC Title 47 CFR, Part 15, Class B for residential and commercial applications. California Title 24 Compliant, JA8 compliant. CEC Listed.

INSTALLATION

Designed for wall mounting on 4" electrical J-Box

WARRANTY

3-year Limited Warranty. See warranty documentation for more info.

COMPATIBLE JUNCTION BOX

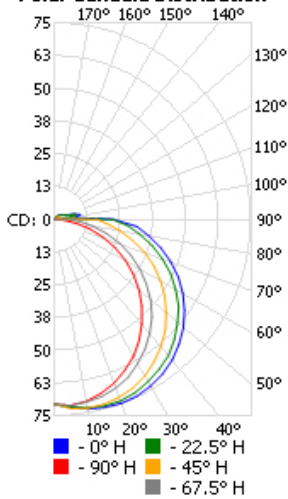


4" PVC	4" Octagon	4" PVC Ceiling Box	3-1/2" Octagon	4" Round Pancake	4" Octagon / V Bracket
--------	------------	--------------------	----------------	------------------	------------------------

PHOTOMETRIC DATA

UCL-12

Polar Candela Distribution



Zonal Lumen Summary

Zone	Lumens	% Lamp	% Luminaire
0-30	54.8	23.7%	23.7%
0-40	90.2	39%	39.1%
0-60	162.9	70.5%	70.5%
60-90	60.8	26.3%	26.3%
70-100	34.9	15.1%	15.1%
90-120	6.2	2.7%	2.7%
0-90	223.6	96.8%	96.8%
90-180	7.3	3.2%	3.2%
0-180	230.9	99.9%	100%

Coefficients Of Utilization - Zonal Cavity Method

Effective Floor Cavity Reflectance: 20%

RCC %:	80				70				50			30			10		0	
RW %:	70	50	30	0	70	50	30	0	50	30	20	50	30	20	50	30	20	0
RCR: 0	1.18	1.18	1.18	1.18	1.15	1.15	1.15	.97	1.09	1.09	1.09	1.04	1.04	1.04	.99	.99	.99	.97
1	1.06	1.01	.96	.91	1.03	.98	.94	.79	.93	.90	.86	.89	.86	.83	.85	.82	.80	.78
2	.96	.87	.80	.73	.93	.85	.78	.65	.81	.75	.70	.77	.72	.68	.73	.69	.66	.63
3	.87	.76	.67	.60	.84	.74	.66	.54	.71	.64	.58	.67	.61	.56	.64	.59	.55	.53
4	.80	.67	.58	.51	.77	.65	.57	.46	.62	.55	.49	.60	.53	.48	.57	.52	.47	.45
5	.73	.60	.50	.43	.71	.58	.49	.40	.56	.48	.42	.53	.47	.41	.51	.45	.41	.38
6	.67	.54	.44	.38	.65	.52	.44	.35	.50	.42	.37	.48	.41	.36	.46	.40	.36	.33
7	.62	.48	.39	.33	.60	.47	.39	.31	.46	.38	.32	.44	.37	.32	.42	.36	.31	.29
8	.58	.44	.35	.29	.56	.43	.35	.28	.42	.34	.29	.40	.33	.28	.39	.33	.28	.26
9	.54	.40	.32	.26	.53	.40	.32	.25	.38	.31	.26	.37	.30	.26	.36	.30	.25	.23
10	.51	.37	.29	.24	.49	.37	.29	.23	.35	.28	.23	.34	.28	.23	.33	.27	.23	.21

Made to order items. Minimum 90 day lead time. Minimum order quantity may vary please contact sales.

¹ DLC Listed / ² DLC Premium Listed / ³ Title 24 / ⁴ JA8 & Title 24 / Typical color consistency. May vary or be changed.

L70 hours calculated based on LED package manufacturer LM80 report and ISTMT report of LED in luminaire. Stated values are for select catalog numbers. Contact Globalux for detailed information. / Actual performance may differ as a result of end-user environment and application. All values are design or typical values, measured under laboratory conditions at 25 °C.