

PROJECT	NOTES	TYPE	DATE	CAT. No.
---------	-------	------	------	----------



TDL

Temporary Disk Light

The LED Temporary Disk Light provides powerful illumination for construction sites, manufacturing plants, and maintenance areas. Emitting a bright 4000K light, it ensures visibility in all indoor settings. Easy to install and operate on AC power, they can be hooked to different points, making them ideal for various work scenarios.



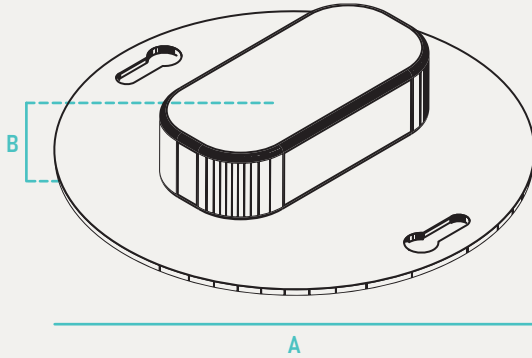
INPUT VOLTAGE	120V
INPUT FREQUENCY	60 Hz
RATED WATTAGE	See Performance Data
DELIVERED LUMENS	See Performance Data
EFFICACY	50 LPW (typ.)
CRI	80CRI
AVAILABLE CCT	4000K
LENS TYPE	Plastic

RATED LIFE	50,000hrs
L70	>50,000hrs
POWER FACTOR	>0.9
THD	<20%
DIMMING	N/A
OPERATING TEMP.	-4°F - 113°F / -20°C to 45°C
BEAM ANGLE	N/A

ORDER INFO / EXAMPLE: TDL-4-10-120-840-WH-BULK

QUICK SHIP ITEMS ON PG.2

SERIES	SIZE	RATED WATTAGE	DRIVER TYPE	COLOR TEMP	FINISH	CASE
TDL	4	10	120	840	WH	BULK
TDL Temporary Disk Light	4- 4"	10- 10W, 700 Lumens	120- 120V	840- 4000K; 80CRI	WH- White	BLANK- Single BULK- 36 Pack Bulk



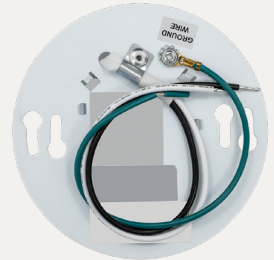
PERFORMANCE DATA

FORM FACTOR	KELVIN	RATED WATTAGE	DELIVERED LUMENS	EFFICACY (LM/W)
4"	4000K	10W	700	70

QUICK SHIP

TDL-4-10-120-840-WH-BULK

ADDITIONAL IMAGES



Made to order items. Minimum 90 day lead time.
 Minimum order quantity may vary please contact sales.
¹ DLC Listed / ² DLC Premium Listed / ³ Title 24 / ⁴ JA8 & Title 24
 Typical color consistency. May vary or be changed. L70 hours calculated based on LED package manufacturer LM80 report and ISTMT report of LED in luminaire. Stated values are for select catalog numbers. Contact GlobaLux for detailed information.
 Actual performance may differ as a result of end-user environment and application. All values are design or typical values, measured under laboratory conditions at 25 °C.

	A	B	Case QTY
TDP	4.13" Dia	0.59" E	36

CONSTRUCTION

Steel housing with diffusion lens for optimal visual comfort while providing uniform light output. Lens design and materials provide uniform appearance without pixelation

ELECTRICAL

Equipped standard with 120V on-board module.

QUALIFICATIONS

All luminaires are built to UL 1598 and 2108 standards, and bear appropriate ETL labels. Damp location labeling is standard. Dedicated 120V Models are FCC Title 47 CFR, Part 15, Class B for residential and commercial applications.

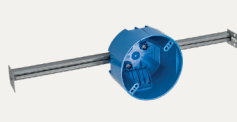
INSTALLATION

4" models are designed for mounting on standard octagonal j-box.

WARRANTY

3-year Limited Warranty. See warranty documentation for more info.

COMPATIBLE JUNCTION BOXES



4" PVC	4" Octagon	4" PVC Ceiling Box	3-1/2" Octagon	4" Round Pancake	4" Octagon / V Bracket
--------	------------	--------------------	----------------	------------------	------------------------